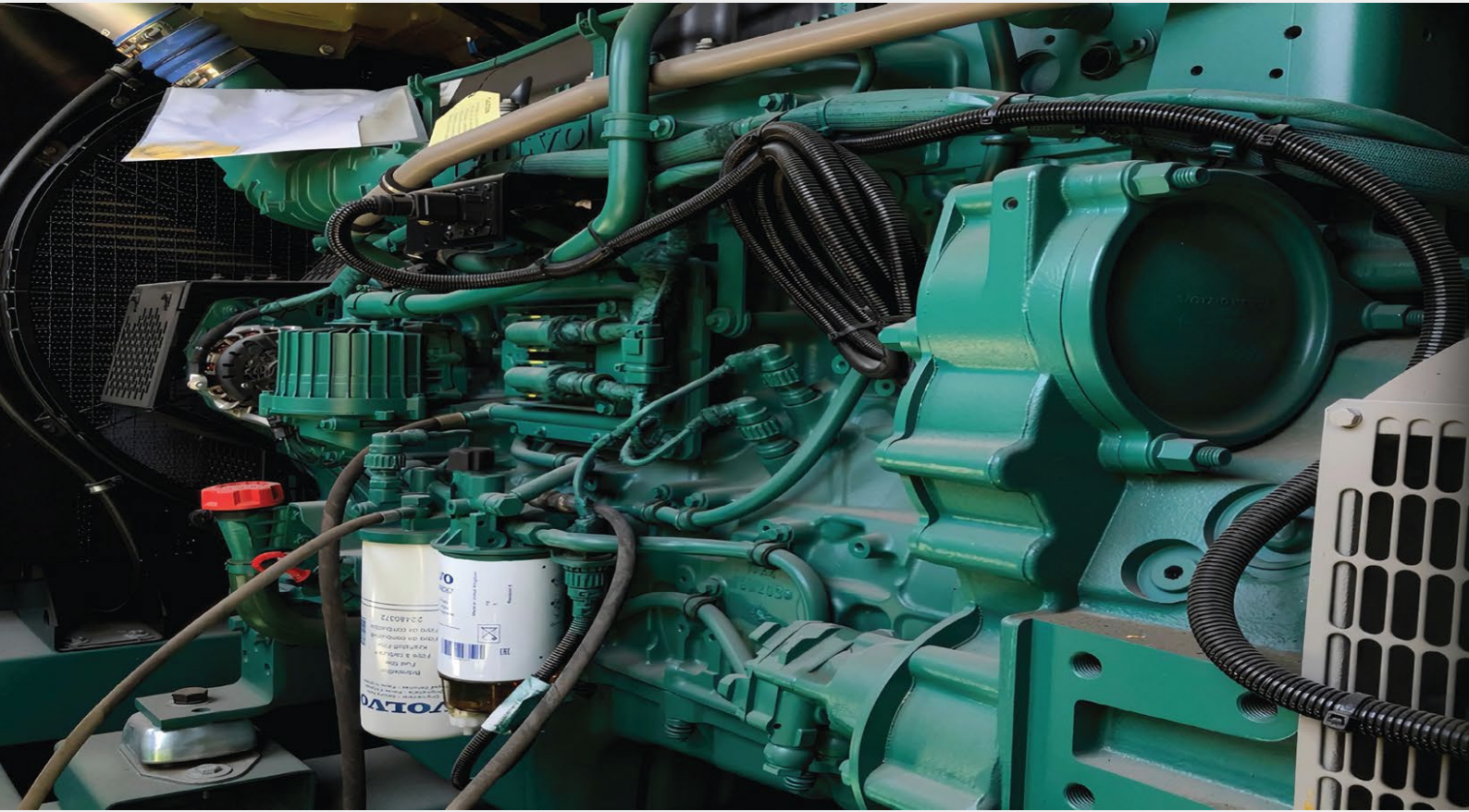


# **GORAN**

## **GENERATOR**

# **SERIES**

**Volvo Penta Powered  
Diesel Generator**



## **VOLVO PENTA**

### **Engine**

- VOLVO PENTA diesel engine
- Revolution: 1500 rpm
- Water cooled
- Tropical: radiator

### **Alternator**

- Synchro type brushless
- Automatic voltage regulation (AVR)
- Short circuit resistance: 300 for 10 seconds
- Insulation class: H
- Insulation resistance: 1800 VAC
- Voltage: 120/208 V – 277/400 V three phase
- Protection class: IP23
- Frequency: 50 Hz

### **Control Panel**

- Microprocessed Electronic Control Panel
- Relays
- Protection fuses
- Thermic magnetic circuit breaker 3-pole
- Emergency stop button

### **Chassis**

- Mounted on the steel base chassis
- Elastic vibration dampers between engine and chassis
- Chassis integrated fuel tank
- Dial type mechanical fuel indicator

### **Canopy**

- Easy moving
- Thermally insulated exhaust system

# GORAN

## GENERATOR

## SERIES

**VOLVO**

Volvo Penta Powered  
Diesel Generator



### TECHNICAL SPECIFICATION GENERATOR SET

GROUP		GGV 110	GGV 145	GGV 172	GGV 200	GGV 220
Stand-by Power	kVA (kWe)	110 (88)	145 (116)	172 (138)	200 (160)	220 (176)
Prime Power	kVA (kWe)	100 (80)	130 (104)	150 (120)	180 (144)	200 (160)
Power Factor	cosφ	0,8	0,8	0,8	0,8	0,8
Frequency	Hz	50	50	50	50	50
<b>ENGINE</b>						
Make		VOLVO PENTA	VOLVO PENTA	VOLVO PENTA	VOLVO PENTA	VOLVO PENTA
Model		TAD531 GE	TAD532 GE	TAD731 GE	TAD732 GE	TAD733 GE
Speed	(RPM)	1500	1500	1500	1500	1500
Stand-by Power	hp (kw)	133 (98)	170 (125)	201 (148)	243 (179)	265 (195)
Prime Power	hp (kw)	119 (88)	153 (112)	180 (133)	218 (160)	238 (175)
Number of Cylinder		4	4	6	6	6
Cylinder Arrangement		In-Line	In-Line	In-Line	In-Line	In-Line
Cycle		4 Stroke	4 Stroke	4 Stroke	4 Stroke	4 Stroke
Aspiration		Turbo	Turbo	Turbo	Turbo	Turbo
Cooling System		Water Cooled	Water Cooled	Water Cooled	Water Cooled	Water Cooled
Governor		Mechanic	Electronic	Mechanic	Electronic	Electronic
Displacement	(lt)	4,76	4,76	7,15	7,15	7,15
Bore and Stroke	(mm)	108 x 130	108 x 130	108 x 130	108 x 130	108 x 130
Electric System		18:01	18:01	18:01	18:01	18:01
Electric System		12 VDC	12 VDC	12 VDC	24 VDC	24 VDC
Fuel Consumption %50 Loaded	(lt/h)	12,1	14,5	18,1	21,2	23,1
Fuel Consumption %75 Loaded	(lt/h)	17,6	21,5	26,3	31,0	34,1
Fuel Consumption %100 Loaded	(lt/h)	23,6	29,2	34,9	41,3	46,0
Fuel Tank Capacity, w/o Canopy (Canopy)	(lt)	195 (358)	263 (318)	263 (503)	477 (503)	477 (503)
<b>ALTERNATOR</b>						
Make		Stamford	Stamford	Stamford	Stamford	Stamford
Model		UCI.274C1	UCI.274E1	UCI.274F1	UCI.274G1	UCI.274H1
Cont. Power	400 V - kVA	100	140	160	182	200
Insulation Resistance	2U+1000V	1800	1800	1800	1800	1800
Insulation Class		H	H	H	H	H
Ingress Protection Rating		IP-23	IP-23	IP-23	IP-23	IP-23
Voltage		231 / 400 V	231 / 400 V	231 / 400 V	231 / 400 V	231 / 400 V
Voltage Regulation		±%1	±%1	±%1	±%1	±%1
<b>DIMENSIONS</b>						
Width, w/o Canopy (Canopy)	(mm)	1100(1100)	1100(1100)	1150(1150)	1300(1300)	1300(1300)
Length, w/o Canopy (Canopy)	(mm)	2070(2650)	2470(2950)	2800(3450)	2970(3650)	2970(3650)
Height, w/o Canopy (Canopy)	(mm)	1890(1890)	1970(1970)	2170(2170)	2300(2300)	2300(2300)
Weight, w/o Canopy (Canopy)	(kg)	1146(1456)	1289(1624)	1595(2070)	1797(2380)	2007(2590)

✉ [gorangenerator@gorangroup.com](mailto:gorangenerator@gorangroup.com) 🏠 Iraq-Erbil-60M str.

☎ 07504483162 - 07704483162

🌐 [www.gorangroup.com](http://www.gorangroup.com)

**GORAN**  
GENERATOR



GROUP		GGV 275	GGV 350	GGV 385	GGV 400	GGV 450
Stand-by Power	kVA (kWe)	275 (220)	350 (286)	385 (308)	400 (320)	450 (360)
Prime Power	kVA (kWe)	250 (200)	325 (260)	350 (280)	350 (280)	400 (320)
Power Factor	cosφ	0,8	0,8	0,8	0,8	0,8
Frequency	Hz	50	50	50	50	50
<b>ENGINE</b>						
Make		VOLVO PENTA	VOLVO PENTA	VOLVO PENTA	VOLVO PENTA	VOLVO PENTA
Model		TAD734 GE	TAD1341 GE	TAD1342 GE	TAD1343 GE	TAD1344 GE
Speed	(RPM)	1500	1500	1500	1500	1500
Stand-by Power	hp (kw)	324 (238)	405 (298)	440 (355)	453 (333)	529 (389)
Prime Power	hp (kw)	290 (213)	369 (271)	405 (325)	412 (303)	481 (354)
Number of Cylinder		6	6	6	6	6
Cylinder Arrangement		In-Line	In-Line	In-Line	In-Line	In-Line
Cycle		4 Stroke	4 Stroke	4 Stroke	4 Stroke	4 Stroke
Aspiration		Turbo	Turbo	Turbo	Turbo	Turbo
Cooling System		Water Cooled	Water Cooled	Water Cooled	Water Cooled	Water Cooled
Governor		Electronic	Electronic	Electronic	Electronic	Electronic
Displacement	(lt)	7,15	12,78	12,78	12,78	12,78
Bore and Stroke	(mm)	108 x 130	131 x 158	131 x 158	131 x 158	131 x 158
Electric System		17:01	18,1 : 1	18,1 : 1	18,1 : 1	18,1 : 1
Electric System		24 VDC	24 VDC	24 VDC	24 VDC	24 VDC
Fuel Consumption %50 Loaded	(lt/h)	30,8	33,3	37,0	37,0	42,8
Fuel Consumption %75 Loaded	(lt/h)	43,0	48,3	53,0	53,3	63,2
Fuel Consumption %100 Loaded	(lt/h)	54,0	63,1	70,0	70,3	83,0
Fuel Tank Capacity, w/o Canopy (Canopy)	(lt)	477 (503)	680 (468)	680 (399)	680 (399)	680 (399)
<b>ALTERNATOR</b>						
Make		Stamford	Stamford	Stamford	Stamford	Stamford
Model		UCD.274K1	S4L1D-D41	S4L1D-E41	S4L1D-E41	S4L1D-F41
Cont. Power	400 V - kVA	250	310	330	360	415
Insulation Resistance	2U+1000V	1800	1800	1800	1800	1800
Insulation Class		H	H	H	H	H
Ingress Protection Rating		IP-23	IP-23	IP-23	IP-23	IP-23
Voltage		231 / 400 V	231 / 400 V	231 / 400 V	231 / 400 V	231 / 400 V
Voltage Regulation		±%1	±%1	±%1	±%1	±%1
<b>DIMENSIONS</b>						
Width, w/o Canopy (Canopy)	(mm)	1300(1300)	1500(1500)	1500(1500)	1500(1500)	1500(1500)
Lenght, w/o Canopy (Canopy)	(mm)	2970(3650)	3200(4300)	3200(4300)	3200(4300)	3200(4300)
Height, w/o Canopy (Canopy)	(mm)	2300(2300)	2510(2510)	2510(2510)	2510(2510)	2510(2510)
Weight, w/o Canopy (Canopy)	(kg)	1943(2526)	2861(3444)	2912 (3566)	2997(3651)	3012(3666)

✉ [gorangenerator@gorangroup.com](mailto:gorangenerator@gorangroup.com) 🏠 Iraq-Erbil-60M str.

☎ 07504483162 - 07704483162

🌐 [www.gorangroup.com](http://www.gorangroup.com)

**GORAN**  
GENERATOR

# GORAN

## GENERATOR

## SERIES

**VOLVO**

Volvo Penta Powered  
Diesel Generator



### TECHNICAL SPECIFICATION GENERATOR SET

GROUP		GGV 500	GGV 560	GGV 660	GGV 710	GGV 770
Stand-by Power	kVA (kWe)	500 (407)	560 (450)	660 (528)	710 (568)	770 (616)
Prime Power	kVA (kWe)	450 (360)	500 (400)	600 (480)	640 (512)	700(560)
Power Factor	cosφ	0,8	0,8	0,8	0,8	0,8
Frequency	Hz	50	50	50	50	50
<b>ENGINE</b>						
Make		VOLVO PENTA	VOLVO PENTA	VOLVO PENTA	VOLVO PENTA	VOLVO PENTA
Model		TAD1345 GE	TAD1641 GE	TAD1642 GE	TWD1643 GE	TWD1645GE
Speed	(RPM)	1500	1500	1500	1500	1500
Stand-by Power	hp (kw)	586 (431)	643 (473)	753 (554)	811 (596)	927 (681)
Prime Power	hp (kw)	528 (388)	585 (430)	684 (503)	729 (536)	842 (619)
Number of Cylinder		6	6	6	6	6
Cylinder Arrangement		In-Line	In-Line	In-Line	In-Line	In-Line
Cycle		4 Stroke	4 Stroke	4 Stroke	4 Stroke	4 Stroke
Aspiration		Turbo	Turbo	Turbo	Turbo	Turbo
Cooling System		Water Cooled	Water Cooled	Water Cooled	Water Cooled	Water Cooled
Governor		Electronic	Electronic	Electronic	Electronic	Electronic
Displacement	(lt)	12,78	16,12	16,12	16,12	16,12
Bore and Stroke	(mm)	131 x 158	144 x 165	144 x 165	144 x 165	144 x 165
Electric System		18,1 : 1	16,5 : 1	16,5 : 1	16,5 : 1	16,5 : 1
Electric System		24 VDC	24 VDC	24 VDC	24 VDC	24 VDC
Fuel Consumption %50 Loaded	(lt/h)	46,5	51,6	58,9	63,7	76.36
Fuel Consumption %75 Loaded	(lt/h)	69,1	76,2	88,4	95,6	109.04
Fuel Consumption %100 Loaded	(lt/h)	91,7	103,2	119,7	129,4	142.45
Fuel Tank Capacity, w/o Canopy (Canopy)	(lt)	680 (399)	1053 (527)	1053 (527)	1218 (527)	515
<b>ALTERNATOR</b>						
Make		Stamford	Stamford	Stamford	Stamford	Stamford
Model		S4L1D-G41	HCI.544C1	HCI.544E1	HCI.544F1	HCI634G
Cont. Power	400 V - kVA	450	500	610	670	730
Insulation Resistance	2U+1000V	1800	1800	1800	1800	1800
Insulation Class		H	H	H	H	H
Ingress Protection Rating		IP-23	IP-23	IP-23	IP-23	IP-23
Voltage		231 / 400 V	231 / 400 V	231 / 400 V	231 / 400 V	231 / 400 V
Voltage Regulation		±%1	±%1	±%1	±%1	±%1
<b>DIMENSIONS</b>						
Width, w/o Canopy (Canopy)	(mm)	1500(1500)	1700(1700)	1700(1700)	1700(1700)	1700(1700)
Lenght, w/o Canopy (Canopy)	(mm)	3200(4300)	3700(4900)	3700(4900)	3700(4900)	3700(4900)
Height, w/o Canopy (Canopy)	(mm)	2510(2510)	2770(2770)	2770(2770)	2770(2770)	2770(2770)
Weight, w/o Canopy (Canopy)	(kg)	3107(3761)	3426(4351)	3636(4561)	4010(4935)	4333(5258)

✉ [gorangenerator@gorangroup.com](mailto:gorangenerator@gorangroup.com) 🏠 Iraq-Erbil-60M str.

☎ 07504483162 - 07704483162

🌐 [www.gorangroup.com](http://www.gorangroup.com)

**GORAN**  
GENERATOR